

LAND FOR SALE

1.59± ACRES

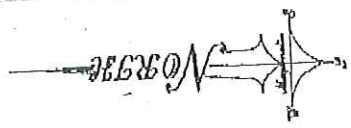
Lot 7 & Lot 8

MOULTRIE, COLQUITT COUNTY, GEORGIA

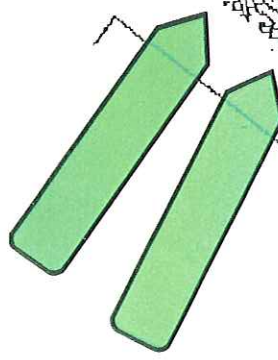
Corner of US Hwy 319 (Veterans Parkway) and GA Hwy 133

Potential Development

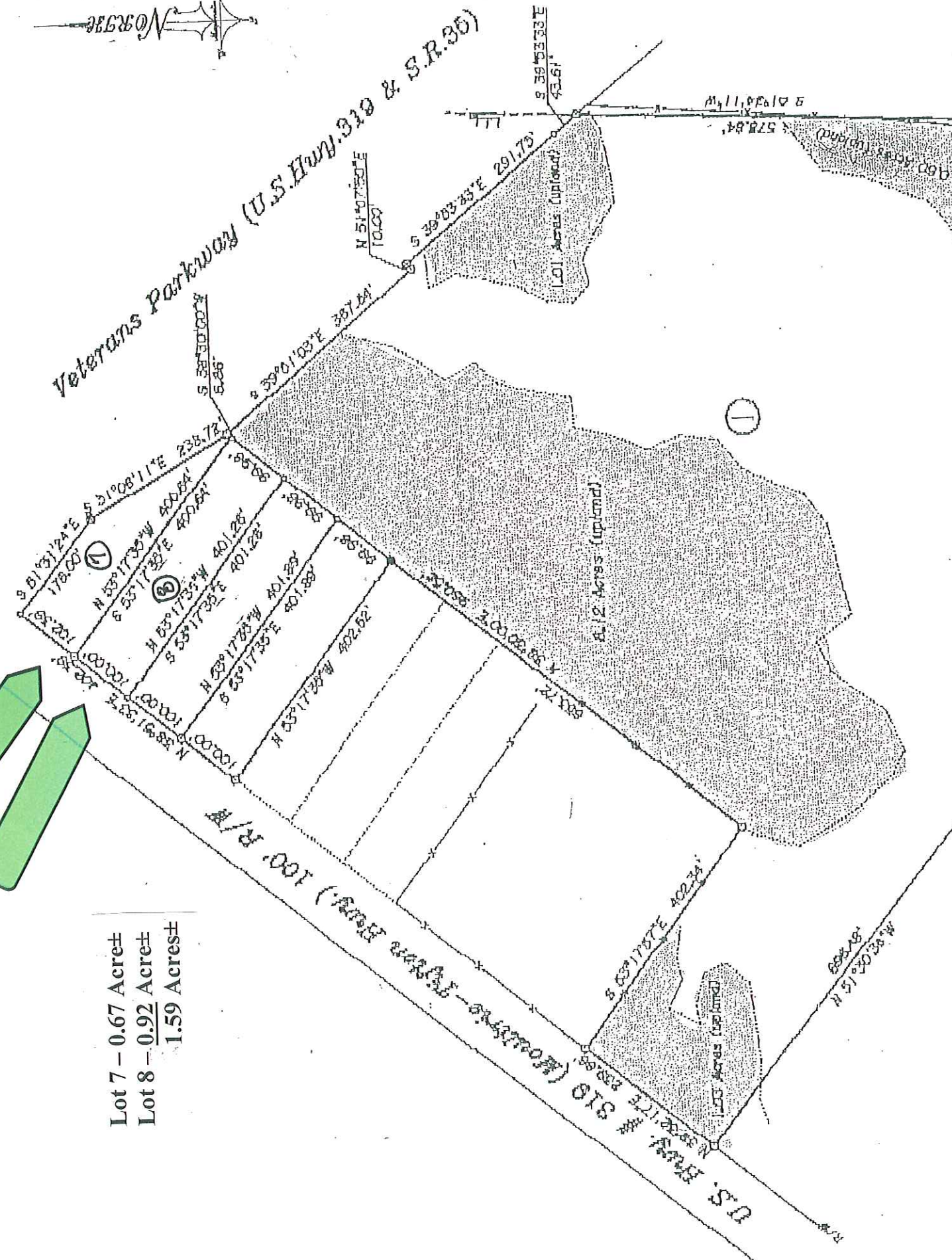
**Ideal for restaurant, office, branch bank, service station/fast food
(Within the next 2 years US Hwy 319 will be 4-laned to Albany. US
Hwy 319 is 4-laned to Tifton). Great location to reach people traveling
to and from Albany, Norman Park, Tifton and tourists going through
Moultrie traveling to Florida or Interstate I-75.**



Veterans Parkway (U.S. Hwy. 319 & S.R. 95)



- Lot 7 - 0.67 Acre±
- Lot 8 - 0.92 Acre±
- 1.59 Acres±



U.S. Hwy. 319 (Mileage 100.58)

8.12 Acres (upland)

1.01 Acres (upland)

1.03 Acres (upland)

11,961.05

578.84

684.48
N 57°40'33\"/>

600 Acres (upland)